

Raising the Standard in Material Handling since 1979.

495 Prince Charles Dr S, Welland



905-788-0971

www.liftline.ca



A chill is in the air

As the weather turns and a chill settles in, it's not just the dropping temperatures we notice. It's the spooky spirit of Halloween creeping closer, too. This month's newsletter is packed with treats—no tricks!

Safety, forklifts and training...oh my!

In this issue:

PAGE 1

- A chill is in the air

PAGE 2

- Safety equipment so good, it's scary!

PAGE 3

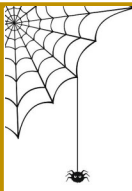
- Trucks for sale

PAGE 4

- Trainer's Corner:

PAGE 5

- New training centre & Customer Bill of Rights



Safety equipment so good, it's scary!

Are you working on promoting safety in your work environment? We have access to a variety of safety materials to help you get started.

Lock out, Tag out



High Visibility Clothing



Signs



Safety Glasses



Call or email to get a copy of our Safety Equipment & Supplies catalogue.

Harnesses and Lanyards



Gloves



For Sale



Make: Nissan
Model: MP1F2A25LV
Capacity: 5,000 lbs
Power: LPG
Mast: Triple
Tires: Pneumatic



Make: Toyota
Model: 8BWS13
Capacity: 2,000 lbs
Power: Electric
Mast: 128" lift
Tires: N/A



Make: Clark
Model: C30L
Capacity: 6,000 lbs
Power: LPG
Mast: Triple
Tires: Pneumatic

Trainer's Corner

The Importance of a Safety Cushion for Forklift Operators

A **safety cushion**—or maintaining adequate space around the forklift—is one of the most important practices for preventing accidents in the workplace. As a forklift operator, you are constantly moving in an environment where people, materials, and equipment share space. Unlike cars, forklifts steer from the rear, making their path less predictable and increasing the risk of collision if there is not enough clearance.

Why this matters to you as an operator:

- **Check your space before moving:** Before you start or change direction, always scan the area around your forklift. Ensure that the space you need to move, turn, or lift is clear of people, obstacles, or hazards.
- **Reaction time:** A safety cushion gives you the extra seconds needed to stop, steer, or avoid a sudden hazard. Without space, there is no room for error.
- **Visibility limitations:** Forklift operators have the challenge of the fixed obstruction of the mast while driving forward. Maintaining distance ensures you can still maneuver safely even with restricted visibility.
- **Pedestrian protection:** People can appear suddenly in your work area. Clear space acts as a protective barrier between your machine and pedestrians, preventing injury.
- **Elevated loads require more space:** As loads are raised, the forklift's stability decreases and the risk of tip-over or load shift increases. Always expand your safety cushion when carrying or lifting loads to higher levels.
- **Material handling:** Loads can shift, swing, or extend beyond the forklift's frame. Adequate clearance prevents damage to racking, structures, and other equipment.
- **Regulatory compliance:** Safety standards (OSHA, CSA, ANSI) require employers to provide safe operating areas, clear pathways, and traffic management systems. By respecting your safety cushion, you help your employer stay compliant and reduce liability.

Best practices to maintain your safety cushion:

1. **Check before you move**—always scan your surroundings for people, obstacles, and clearance.
2. Keep **safe clearances** when turning corners, driving near racking, or operating around fixed structures.
3. Leave **enough stopping distance** between you and other forklifts or moving equipment.
4. Use **designated pathways** and never cut through pedestrian areas.
5. Watch for **blind spots and intersections**—slow down and use your horn to warn others.
6. **Increase your space as loads rise**—the higher the load, the more unstable the forklift becomes, so give yourself extra clearance.



Assume pedestrians may act unpredictably—space gives you the margin to protect them. Maintaining this buffer zone is not just about following rules—it is about protecting yourself, your coworkers, and the equipment you operate. A moment's carelessness or a few inches too close can lead to a serious accident. A safety cushion is your **built-in insurance policy** every time you operate.

- Doug Littlewood

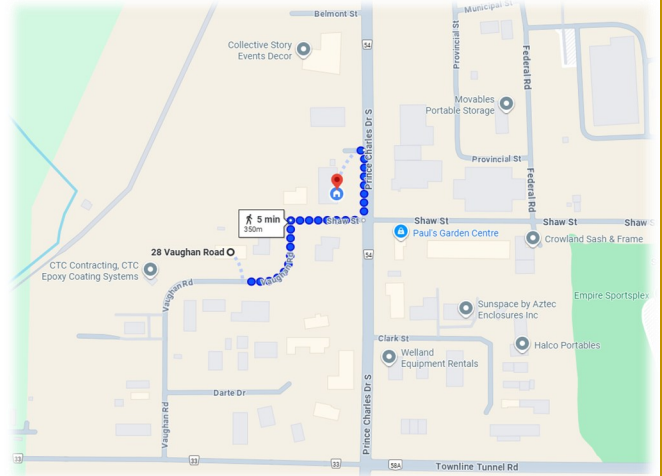
Training Manager



Our Training Centre has moved!

Our Training Centre, which has been next to our Parts Department, has been relocated. The new location is just around the corner from our shop at 28 Vaughn Rd. The facility has a bigger classroom filled with natural lighting; a kitchen stocked with a fridge, coffee and water; a washroom and onsite parking. This location allows for indoor and outdoor practical training, which will be beneficial when the weather gets cold and soggy.

Same exceptional training program, fresh new look and feel!



46 years ago Lift Line Machinery Ltd. began with the following Customer Bill of Rights:

Our Customers Have the Right to Expect:

- timely service as viewed from their perspective;
- service at a reasonable expense;
- courtesy, respect and empathy regardless of the situation;
- us to listen so as to understand their problems;
- communicate clearly and concisely with them;
- us to fix it right the first time and provide zero defects;
- expect all of our people to be qualified;
- us to be dedicated to go the extra mile;
- personalized service that addresses their specific needs;
- cleanliness in whatever our service for them might be.

We have stuck to this Customer Bill of Rights every day since 1979!